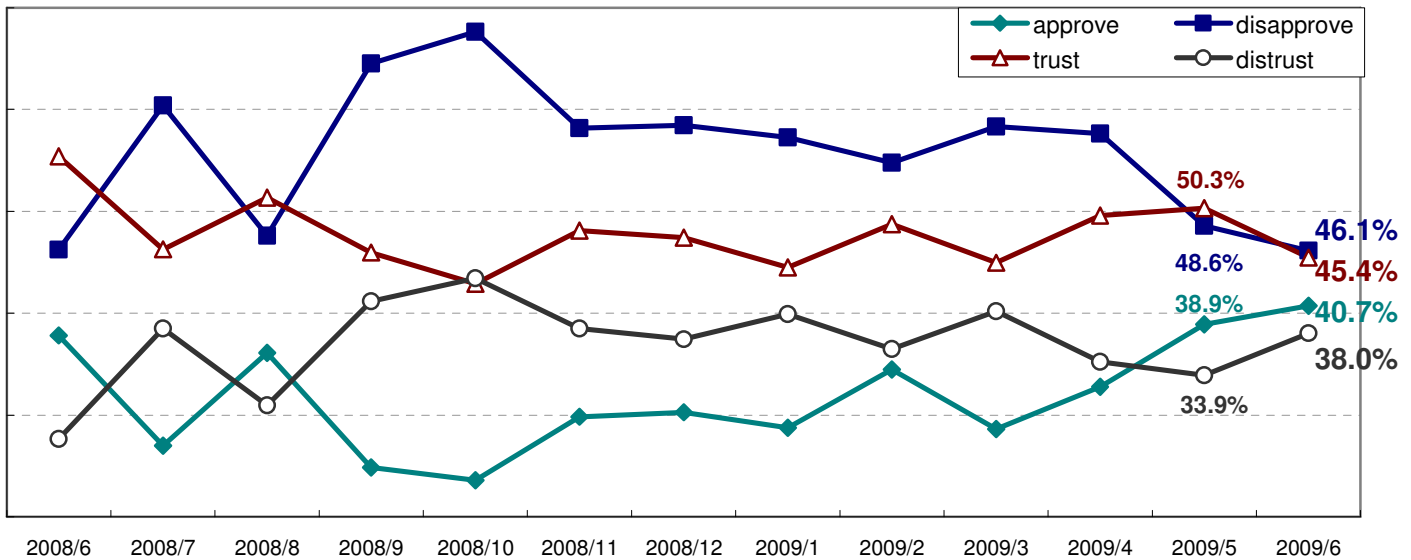


Survey on President Ma's Approval Rating

A. President Ma Ying-jeou's approval rating this month: His approval rating is 40.7 percent, and his disapproval rating is 46.1. 45.4 percent of Taiwanese say they trust him, while 38.0 percent say they do not trust him.

This GVSRC survey shows 40.7 percent of Taiwanese say they are satisfied with Ma's governance this month, while 46.1 percent say they are not satisfied with his performance. Compared with last month, Ma's approval rating rises 1.8 percent, and his disapproval rating falls 2.5 percent. Although Ma's approval rating hits a record this month since he took office last May, his disapproval rating is still higher than his approval rating. But again the gap between the two has been shrinking gradually. At the same time, 45.4 percent of Taiwanese say they trust him, while 38.0 percent say they distrust him this month. Compared with last month, the level of public trust in him falls 4.9 percent, and the level of public distrust in him rises 4.1 percent.

The trend of approval for Ma and public trust in him



B. 55.0 percent of Taiwanese say the president should not double as ruling KMT chairperson as he is also the commander-in-chief. 25.4 percent say he should be allowed to double as ruling KMT chairperson since he won the presidential election as party nominee.

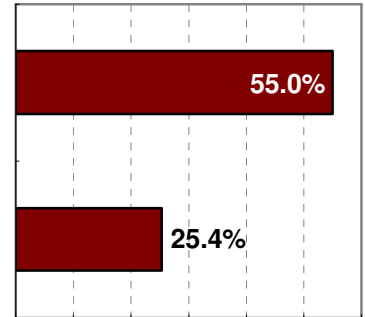
Taiwanese people are divided on the issue of whether the president can double as ruling KMT chairperson. This GVSRC survey shows 55.0 percent of Taiwanese say the president should not double as ruling KMT chairperson as he is also the commander-in-chief and Constitution of the Republic of China (Taiwan) stipulates that the military should put itself above

party politics. On the other hand, 25.4 percent of Taiwanese say the president should be allowed to double as ruling party chairperson because he won the presidential election as party nominee. Among the KMT supporters, 45.6 percent say the president should be allowed to double as party chairperson, while 43.9 percent say he should not. It is clear that even the supporters are divided on the issue.

Should the president be allowed to double as ruling KMT chairperson?

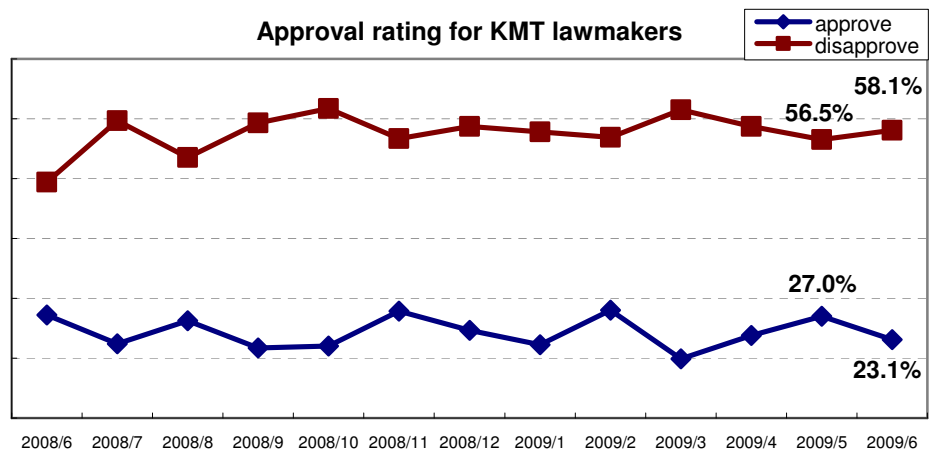
The president also serves as commander-in-chief, so he should not double as KMT chairperson.

Ma won the presidential elections as KMT nominee, so he should be allowed to double as party chairperson.



C. Ruling KMT lawmakers' approval rating is 23.1 percent and disapproval rating is 58.1 percent.

The ruling KMT controls more than 70 percent of all legislative seats and shares an absolute majority in the legislature. Further, the legislature passed a total of 134 bills in the last session, a record for a single session in seven years. However, this GVSRC survey shows



58.1 percent of Taiwanese say they disapprove of KMT lawmakers' performance, with 35.2 saying they are very dissatisfied with KMT legislators and 22.9 percent say they are somewhat dissatisfied. The lawmakers' disapproval rating is far higher than its approval rating of 23.1 percent. Compared with last month, KMT lawmakers' approval rating falls 3.9 percent, and their disapproval rating rises 1.6 percent.

This survey was conducted by GVSRC from 6.20 p.m. to 10.00 p.m. on June 16-17, 2009. It was conducted with random-digit-dial sampling and computer-assisted telephone interviewing methods. 1004 people who are 20 or older completed the interview. One can say with 95% confidence that the theoretical margin of sampling error is $\pm 3.1\%$. Gender, living areas, ages, educational level and other features of the interviewees have undergone weighting procedure and test of the sample's representativeness in the survey results.